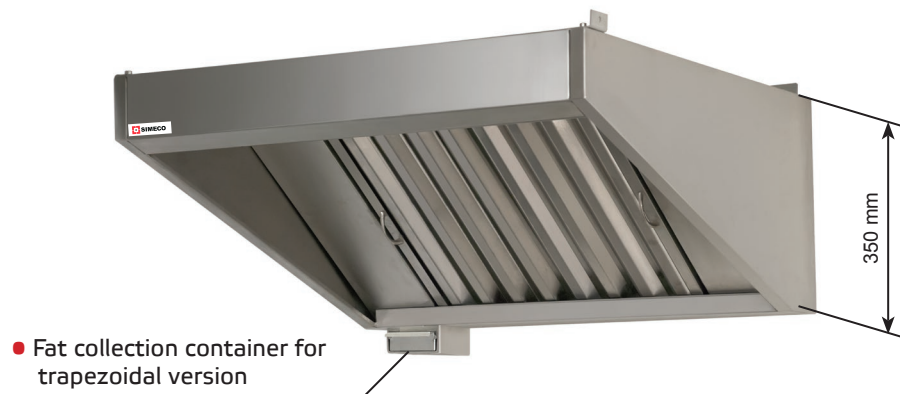


EXHAUST HOODS



032, 034. WALL EXHAUST HOODS WITHOUT MOTOR

- Steel AISI 430
- Execution versions: trapezoid; cubic with a bevel; cubic;
- Welded construction
- Labyrinth filter
- Drain channel for fat assembly for cubic version
- It is possible to manufacture wall exhaust hood with non-standard sizes



WALL EXHAUST HOOD WITHOUT MOTOR (TRAPEZOID)

Length, mm	Depth, mm	Code	W, kg	Depth, mm	Code	W, kg
800	800	032.0US.00925	19,6	900	032.0US.00934	20,5
900	800	032.0US.04779	21,3	900	032.0US.05396	22,2
1000	800	032.0US.04758	25,3	900	032.0US.04833	26,0
1100	800	032.0US.03084	26,9	900	032.0US.14347	27,9
1200	800	032.0US.04472	28,6	900	032.0US.00936	29,7
1300	800	032.0US.14341	30,3	900	032.0US.04735	31,4
1400	800	032.0US.04935	31,9	900	032.0US.04832	33,2
1500	800	032.0US.05271	35,9	900	032.0US.05587	37,1
1600	800	032.0US.05118	37,6	900	032.0US.14348	38,9
1700	800	032.0US.14342	39,2	900	032.0US.14349	40,6
1800	800	032.0US.00930	40,9	900	032.0US.05588	42,3
1900	800	032.0US.06427	44,8	900	032.0US.04930	46,3
2000	800	032.0US.14343	46,5	900	032.0US.00940	48,1
2100	800	032.0US.14344	48,2	900	032.0US.04868	49,8
2200	800	032.0US.14345	49,8	900	032.0US.14350	51,6
2300	800	032.0US.14346	51,5	900	032.0US.14351	53,3
2400	800	032.0US.07306	55,5	900	032.0US.14352	57,3



Length, mm	Depth, mm	Code	W, kg	Depth, mm	Code	W, kg	Depth, mm	Code	W, kg
800	1000	032.0US.00943	21,3	1100	032.0US.14362	22,1	1200	032.0US.14373	23,0
900	1000	032.0US.06148	23,1	1100	032.0US.14363	24,0	1200	032.0US.14374	24,9
1000	1000	032.0US.04172	27,2	1100	032.0US.06672	28,1	1200	032.0US.14375	29,1
1100	1000	032.0US.14353	29,0	1100	032.0US.14364	30,0	1200	032.0US.14376	31,0
1200	1000	032.0US.00945	30,8	1100	032.0US.05437	31,8	1200	032.0US.06319	32,9
1300	1000	032.0US.14354	32,6	1100	032.0US.14365	33,7	1200	032.0US.14377	34,8
1400	1000	032.0US.14355	36,4	1100	032.0US.05436	35,6	1200	032.0US.14378	36,7
1500	1000	032.0US.04232	38,4	1100	032.0US.14366	39,7	1200	032.0US.14379	40,9
1600	1000	032.0US.00947	40,2	1100	032.0US.14367	41,5	1200	032.0US.14380	42,9
1700	1000	032.0US.14356	42,0	1100	032.0US.14368	43,4	1200	032.0US.14381	44,8
1800	1000	032.0US.07529	43,8	1100	032.0US.01940	45,2	1200	032.0US.14382	46,7
1900	1000	032.0US.14357	47,9	1100	032.0US.14369	49,4	1200	032.0US.14383	50,9
2000	1000	032.0US.14358	49,7	1100	032.0US.14370	51,2	1200	032.0US.14384	52,7
2100	1000	032.0US.14359	51,5	1100	032.0US.14371	53,1	1200	032.0US.14385	54,6
2200	1000	032.0US.14360	53,3	1100	032.0US.05028	55,0	1200	032.0US.06331	56,4
2300	1000	032.0US.14361	55,1	1100	032.0US.14372	56,8	1200	032.0US.04471	58,3
2400	1000	032.0US.04614	59,1	1100	032.0US.05408	60,9	1200	032.0US.05902	62,7

EXHAUST HOOD SIMECO can be supplied with a mounting kit and a lighting on request (p.81). It is possible to design with holes for connection to ventilation and to manufacture flanges for connection to the duct.



WALL EXHAUST HOOD WITHOUT MOTOR WITH LIGHTING (TRAPEZOID)



Length, mm	Depth, mm	Code	W, kg	Depth, mm	Code	W, kg
800	800	034.0US.05039	20,1	900	034.0US.14398	20,9
900	800	034.0US.14386	21,7	900	034.0US.02090	22,6
1000	800	034.0US.14387	25,7	900	034.0US.05348	26,4
1100	800	034.0US.14388	27,4	900	034.0US.04755	28,4
1200	800	034.0US.14389	29,0	900	034.0US.07481	30,1
1300	800	034.0US.06247	30,7	900	034.0US.06520	31,8
1400	800	034.0US.14390	32,7	900	034.0US.05081	34,0
1500	800	034.0US.14391	36,7	900	034.0US.14399	38,0
1600	800	034.0US.00929	38,4	900	034.0US.06251	39,7
1700	800	034.0US.14392	40,0	900	034.0US.14400	41,4
1800	800	034.0US.14393	41,7	900	034.0US.06356	43,1
1900	800	034.0US.02031	45,6	900	034.0US.14401	47,2
2000	800	034.0US.14394	47,3	900	034.0US.06352	48,9
2100	800	034.0US.14395	49,0	900	034.0US.14402	50,6
2200	800	034.0US.14396	50,7	900	034.0US.06216	52,4
2300	800	034.0US.14397	52,3	900	034.0US.14403	54,1
2400	800	034.0US.07287	56,3	900	034.0US.05829	58,1

Length, mm	Depth, mm	Code	W, kg	Depth, mm	Code	W, kg	Depth, mm	Code	W, kg
800	1000	034.0US.14404	21,7	1100	034.0US.14411	22,6	1200	034.0US.14418	23,4
900	1000	034.0US.14405	23,5	1100	034.0US.14412	24,4	1200	034.0US.14419	25,3
1000	1000	034.0US.04904	27,6	1100	034.0US.01985	28,5	1200	034.0US.14420	29,5
1100	1000	034.0US.01456	29,4	1100	034.0US.01606	30,4	1200	034.0US.06353	31,4
1200	1000	034.0US.14406	31,2	1100	034.0US.05447	32,3	1200	034.0US.14421	33,3
1300	1000	034.0US.14407	33,0	1100	034.0US.01776	34,1	1200	034.0US.14422	35,3
1400	1000	034.0US.06324	35,2	1100	034.0US.05080	36,4	1200	034.0US.05591	37,6
1500	1000	034.0US.07217	39,2	1100	034.0US.14413	40,5	1200	034.0US.14423	41,7
1600	1000	034.0US.01715	41,0	1100	034.0US.14414	42,3	1200	034.0US.06321	43,1
1700	1000	034.0US.05649	42,9	1100	034.0US.04294	44,2	1200	034.0US.14424	45,6
1800	1000	034.0US.04905	44,6	1100	034.0US.04295	46,1	1200	034.0US.14425	47,5
1900	1000	034.0US.14408	48,7	1100	034.0US.05999	50,2	1200	034.0US.05592	51,7
2000	1000	034.0US.00949	50,5	1100	034.0US.06177	52,0	1200	034.0US.04265	53,5
2100	1000	034.0US.14409	52,3	1100	034.0US.14415	53,9	1200	034.0US.05242	55,4
2200	1000	034.0US.00950	54,1	1100	034.0US.06129	55,8	1200	034.0US.06079	57,2
2300	1000	034.0US.06598	55,9	1100	034.0US.14416	57,6	1200	034.0US.06256	59,1
2400	1000	034.0US.14410	59,9	1100	034.0US.14417	61,7	1200	034.0US.14426	63,6

Production of other designs of wall exhaust hoods is possible:

WALL EXHAUST HOOD WITHOUT MOTOR N (CUBIC WITH A BEVEL)

WALL EXHAUST HOOD WITHOUT MOTOR N WITH LIGHTING (CUBIC WITH A BEVEL)

Length, mm	Depth, mm	Height, mm	Note
от 800 до 2400	800*	350	Dimensions in steps of 100 mm
от 800 до 2400	900**	350	
от 800 до 2400	1000	350	
от 800 до 2400	1100	350	
от 800 до 2400	1200	350	

* - the depth of exhaust hoods without lighting from 800 mm

** - the depth of exhaust hoods with lighting from 900 mm



WALL EXHAUST HOOD WITHOUT MOTOR (CUBIC)

WALL EXHAUST HOOD WITHOUT MOTOR WITH LIGHTING (CUBIC)

Length, mm	Depth, mm	Height, mm	Note
от 800 до 2400	800	350	Dimensions in steps of 100 mm
от 800 до 2400	900		
от 800 до 2400	1000		
от 800 до 2400	1100		
от 800 до 2400	1200		
от 800 до 2400	800	500	Dimensions in steps of 100 mm
от 800 до 2400	900		
от 800 до 2400	1000		
от 800 до 2400	1100		
от 800 до 2400	1200		



036, 038. CENTRAL EXHAUST HOODS WITHOUT MOTOR

- Steel AISI 430
- Execution versions: trapezoid; cubic with a bevel; cubic
- Welded construction
- Labyrinth filter
- Drain channel for fat assembly for cubic version
- It is possible to manufacture wall exhaust hood with non-standard sizes



- Fat collection container for trapezoidal version

CENTRAL EXHAUST HOOD WITHOUT MOTOR (TRAPEZOID)

Length, mm	Depth, mm	Code	W, kg	Depth, mm	Code	W, kg	Depth, mm	Code	W, kg
800	1200	036.0US.01377	27,3	1400	036.0US.14601	28,9	1600	036.0US.04482	33,2
900	1200	036.0US.14589	29,5	1400	036.0US.14602	31,3	1600	036.0US.01752	36,0
1000	1200	036.0US.14590	35,9	1400	036.0US.03074	37,8	1600	036.0US.14616	43,5
1100	1200	036.0US.06208	38,2	1400	036.0US.14603	40,2	1600	036.0US.14617	47,2
1200	1200	036.0US.14591	40,5	1400	036.0US.14604	42,6	1600	036.0US.14618	49,0
1300	1200	036.0US.14592	42,7	1400	036.0US.14605	45,0	1600	036.0US.06501	51,7
1400	1200	036.0US.14593	45,0	1400	036.0US.14606	47,4	1600	036.0US.14619	54,5
1500	1200	036.0US.01494	51,4	1400	036.0US.05589	53,9	1600	036.0US.14620	61,9
1600	1200	036.0US.05200	53,6	1400	036.0US.14607	56,3	1600	036.0US.14621	64,7
1700	1200	036.0US.14594	55,9	1400	036.0US.14608	58,7	1600	036.0US.14622	67,4
1800	1200	036.0US.14595	58,2	1400	036.0US.14609	61,1	1600	036.0US.14623	70,2
1900	1200	036.0US.14596	64,6	1400	036.0US.14610	67,6	1600	036.0US.14624	77,7
2000	1200	036.0US.06207	66,8	1400	036.0US.14611	70,0	1600	036.0US.14625	80,4
2100	1200	036.0US.14597	69,1	1400	036.0US.14612	72,4	1600	036.0US.14626	83,2
2200	1200	036.0US.14598	71,4	1400	036.0US.14613	74,8	1600	036.0US.14627	85,9
2300	1200	036.0US.14599	73,7	1400	036.0US.14614	77,2	1600	036.0US.14628	88,7
2400	1200	036.0US.14600	80,0	1400	036.0US.14615	83,7	1600	036.0US.14629	96,1



Length, mm	Depth, mm	Code	W, kg	Depth, mm	Code	W, kg	Depth, mm	Code	W, kg	Depth, mm	Code	W, kg
800	1800	036.0US.14630	34,9	2000	036.0US.14645	36,5	2200	036.0US.14659	38,2	2400	036.0US.14676	39,9
900	1800	036.0US.14631	37,8	2000	036.0US.14646	39,5	2200	036.0US.14660	41,3	2400	036.0US.14677	43,1
1000	1800	036.0US.14632	45,4	2000	036.0US.14647	47,3	2200	036.0US.14661	49,2	2400	036.0US.14678	51,1
1100	1800	036.0US.14633	48,2	2000	036.0US.14648	50,3	2200	036.0US.14662	52,3	2400	036.0US.14679	54,3
1200	1800	036.0US.14634	51,1	2000	036.0US.14649	53,3	2200	036.0US.14663	55,4	2400	036.0US.14680	57,6
1300	1800	036.0US.14635	54,0	2000	036.0US.14650	56,3	2200	036.0US.14664	58,5	2400	036.0US.14681	60,8
1400	1800	036.0US.14636	56,8	2000	036.0US.14651	59,3	2200	036.0US.14665	61,7	2400	036.0US.14682	64,0
1500	1800	036.0US.14637	64,5	2000	036.0US.14652	67,0	2200	036.0US.14666	69,5	2400	036.0US.14683	72,0
1600	1800	036.0US.14638	67,3	2000	036.0US.04311	70,0	2200	036.0US.14667	72,6	2400	036.0US.14684	75,3
1700	1800	036.0US.14639	70,2	2000	036.0US.14653	73,0	2200	036.0US.14668	75,7	2400	036.0US.14685	78,5
1800	1800	036.0US.05074	73,1	2000	036.0US.14654	76,0	2200	036.0US.14669	78,9	2400	036.0US.14686	81,8
1900	1800	036.0US.14640	80,7	2000	036.0US.14655	83,7	2200	036.0US.14670	86,7	2400	036.0US.14687	89,7
2000	1800	036.0US.14641	83,5	2000	036.0US.00976	86,7	2200	036.0US.14671	89,8	2400	036.0US.14688	93,0
2100	1800	036.0US.05635	86,4	2000	036.0US.14656	89,7	2200	036.0US.14672	93,0	2400	036.0US.14689	96,2
2200	1800	036.0US.14642	89,3	2000	036.0US.14657	92,7	2200	036.0US.14673	96,1	2400	036.0US.14690	99,5
2300	1800	036.0US.14643	92,2	2000	036.0US.14658	95,7	2200	036.0US.14674	99,2	2400	036.0US.14691	102,7
2400	1800	036.0US.14644	99,8	2000	036.0US.00978	103,4	2200	036.0US.14675	107	2400	036.0US.14692	110,7

CENTRAL EXHAUST HOOD WITHOUT MOTOR WITH LIGHTING (TRAPEZOID)



Length, mm	Depth, mm	Code	W, kg	Depth, mm	Code	W, kg	Depth, mm	Code	W, kg
800	1400	038.0US.14703	29,8	1600	038.0US.14720	34,1	1800	038.0US.14737	35,7
900	1400	038.0US.14704	32,2	1600	038.0US.14721	36,8	1800	038.0US.14738	38,6
1000	1400	038.0US.14705	38,7	1600	038.0US.14722	44,3	1800	038.0US.14739	46,2
1100	1400	038.0US.14706	41,1	1600	038.0US.14723	47,1	1800	038.0US.14740	49,1
1200	1400	038.0US.14707	43,5	1600	038.0US.14724	49,8	1800	038.0US.05500	52,0
1300	1400	038.0US.14708	45,9	1600	038.0US.14725	52,6	1800	038.0US.14741	54,8
1400	1400	038.0US.14709	49,1	1600	038.0US.14726	56,1	1800	038.0US.14742	58,5
1500	1400	038.0US.14710	55,5	1600	038.0US.14727	63,6	1800	038.0US.14743	66,1
1600	1400	038.0US.14711	57,9	1600	038.0US.14728	66,3	1800	038.0US.05522	69,0
1700	1400	038.0US.14712	60,3	1600	038.0US.14729	69,0	1800	038.0US.14744	71,8
1800	1400	038.0US.14713	62,7	1600	038.0US.14730	71,8	1800	038.0US.06351	74,7
1900	1400	038.0US.14714	69,2	1600	038.0US.14731	79,3	1800	038.0US.14745	82,3
2000	1400	038.0US.14715	71,6	1600	038.0US.14732	82,0	1800	038.0US.14746	85,2
2100	1400	038.0US.14716	74,0	1600	038.0US.14733	84,0	1800	038.0US.14747	88,0
2200	1400	038.0US.14717	76,4	1600	038.0US.14734	87,5	1800	038.0US.14748	90,9
2300	1400	038.0US.14718	78,8	1600	038.0US.14735	90,3	1800	038.0US.14749	93,8
2400	1400	038.0US.14719	85,3	1600	038.0US.14736	97,8	1800	038.0US.14750	101,4

Length, mm	Depth, mm	Code	W, kg	Depth, mm	Code	W, kg	Depth, mm	Code	W, kg
800	2000	038.0US.14751	37,4	2200	038.0US.14765	39,1	2400	038.0US.14779	40,7
900	2000	038.0US.14752	40,4	2200	038.0US.14766	42,2	2400	038.0US.14780	44,0
1000	2000	038.0US.14753	48,1	2200	038.0US.14767	50,0	2400	038.0US.14781	51,9
1100	2000	038.0US.14754	51,1	2200	038.0US.14768	53,2	2400	038.0US.14782	55,2
1200	2000	038.0US.14755	54,1	2200	038.0US.14769	56,3	2400	038.0US.14783	58,4
1300	2000	038.0US.14756	57,1	2200	038.0US.14770	59,4	2400	038.0US.14784	61,7
1400	2000	038.0US.14757	60,9	2200	038.0US.14771	63,3	2400	038.0US.14785	65,7
1500	2000	038.0US.14758	68,6	2200	038.0US.14772	71,1	2400	038.0US.14786	73,7
1600	2000	038.0US.14759	71,6	2200	038.0US.14773	74,3	2400	038.0US.14787	76,9
1700	2000	038.0US.14760	74,6	2200	038.0US.14774	77,4	2400	038.0US.14788	80,2
1800	2000	038.0US.00975	77,6	2200	038.0US.06529	80,5	2400	038.0US.14789	83,4
1900	2000	038.0US.14761	85,3	2200	038.0US.14775	88,3	2400	038.0US.14790	91,4
2000	2000	038.0US.14762	88,3	2200	038.0US.14776	91,5	2400	038.0US.14791	94,6
2100	2000	038.0US.14763	91,3	2200	038.0US.14777	94,6	2400	038.0US.14792	97,8
2200	2000	038.0US.14764	94,3	2200	038.0US.06258	97,7	2400	038.0US.14793	101,1
2300	2000	038.0US.07480	97,3	2200	038.0US.14778	100,8	2400	038.0US.14794	104,3
2400	2000	038.0US.05531	105,0	2200	038.0US.05698	108,6	2400	038.0US.14795	112,3

Production of other designs of wall exhaust hoods is possible:

CENTRAL EXHAUST HOOD WITHOUT MOTOR N (CUBIC WITH A BEVEL)

CENTRAL EXHAUST HOOD WITHOUT MOTOR N WITH LIGHTING (CUBIC WITH A BEVEL)

Length, mm	Depth, mm	Height, mm	Note
от 800 до 2400	1600*	350	Dimensions in length with step of 100 mm
от 800 до 2400	1800**	350	
от 800 до 2400	2000	350	Dimensions in depth with step of 200 mm
от 800 до 2400	2200	350	
от 800 до 2400	2400	350	

* - the depth of exhaust hoods without lighting from 1600 mm

** - the depth of exhaust hoods with lighting from 1800 mm

CENTRAL EXHAUST HOOD WITHOUT MOTOR (CUBIC)

CENTRAL EXHAUST HOOD WITHOUT MOTOR WITH LIGHTING (CUBIC)

Length, mm	Depth, mm	Height, mm	Note
от 800 до 2400	1200*	350	Dimensions in length with step of 100 mm
от 800 до 2400	1400**		
от 800 до 2400	1600		Dimensions in depth with step of 200 mm
от 800 до 2400	1800		
от 800 до 2400	2000		
от 800 до 2400	2200		
от 800 до 2400	2400	500	Dimensions in length with step of 100 mm
от 800 до 2400	1200*		
от 800 до 2400	1400**		Dimensions in depth with step of 200 mm
от 800 до 2400	1600		
от 800 до 2400	1800		
от 800 до 2400	2000		
от 800 до 2400	2200		
от 800 до 2400	2400		

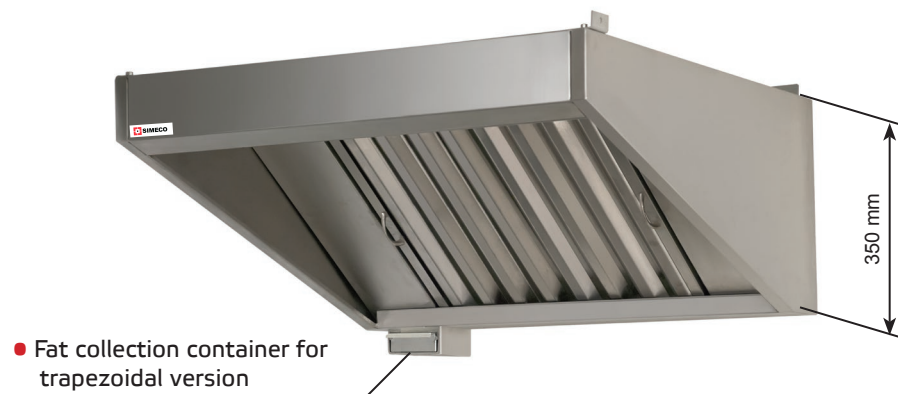
* - the depth of exhaust hoods without lighting from 1200 mm

** - the depth of exhaust hoods with lighting from 1400 mm



033, 035. WALL EXHAUST HOODS WITH MOTOR

- Steel AISI 430
- Execution versions: trapezoid; cubic with a bevel; cubic;
- Welded construction
- Labyrinth filter
- Drain channel for fat assembly in case cubic version
- Adjustable inflow area
- It is possible to manufacture wall exhaust hood with non-standard sizes



WALL EXHAUST HOOD WITH MOTOR (TRAPEZOID)

Length, mm	Depth, mm	Code	W, kg	Depth, mm	Code	W, kg
800	800	033.0US.01702	20,5	900	033.0US.06282	21,8
900	800	033.0US.14510	22,2	900	033.0US.14523	23,7
1000	800	033.0US.00981	26,3	900	033.0US.14524	27,8
1100	800	033.0US.14511	28,1	900	033.0US.14525	29,7
1200	800	033.0US.05351	29,8	900	033.0US.14526	31,6
1300	800	033.0US.14512	31,6	900	033.0US.14527	33,5
1400	800	033.0US.14513	33,4	900	033.0US.14528	35,4
1500	800	033.0US.14514	37,4	900	033.0US.14529	39,6
1600	800	033.0US.14515	39,2	900	033.0US.14530	41,5
1700	800	033.0US.14516	41,0	900	033.0US.14531	43,4
1800	800	033.0US.14517	42,7	900	033.0US.14532	45,3
1900	800	033.0US.14518	46,8	900	033.0US.14533	49,4
2000	800	033.0US.05489	48,6	900	033.0US.14534	51,3
2100	800	033.0US.14519	50,4	900	033.0US.14535	53,2
2200	800	033.0US.14520	52,1	900	033.0US.14536	55,1
2300	800	033.0US.14521	53,9	900	033.0US.14537	57,0
2400	800	033.0US.14522	58,0	900	033.0US.14538	61,2



Length, mm	Depth, mm	Code	W, kg	Depth, mm	Code	W, kg	Depth, mm	Code	W, kg
800	1000	033.0US.14539	23,2	1100	033.0US.14555	24,6	1200	033.0US.14572	26,0
900	1000	033.0US.14540	25,2	1100	033.0US.14556	26,8	1200	033.0US.14573	28,3
1000	1000	033.0US.00944	29,5	1100	033.0US.14557	31,2	1200	033.0US.14574	32,9
1100	1000	033.0US.14541	31,5	1100	033.0US.14558	33,4	1200	033.0US.14575	35,2
1200	1000	033.0US.14542	33,6	1100	033.0US.14559	35,5	1200	033.0US.14576	37,5
1300	1000	033.0US.14543	35,6	1100	033.0US.14560	37,7	1200	033.0US.14577	39,9
1400	1000	033.0US.14544	37,6	1100	033.0US.14561	39,9	1200	033.0US.14578	42,2
1500	1000	033.0US.14545	41,9	1100	033.0US.14562	44,3	1200	033.0US.14579	46,7
1600	1000	033.0US.14546	44,0	1100	033.0US.14563	46,5	1200	033.0US.14580	49,0
1700	1000	033.0US.14547	46,0	1100	033.0US.14564	48,7	1200	033.0US.14581	51,3
1800	1000	033.0US.14548	48,0	1100	033.0US.14565	50,9	1200	033.0US.14582	53,6
1900	1000	033.0US.14549	52,3	1100	033.0US.14566	55,3	1200	033.0US.14583	58,3
2000	1000	033.0US.14550	54,4	1100	033.0US.14567	57,4	1200	033.0US.14584	60,5
2100	1000	033.0US.14551	56,4	1100	033.0US.14568	59,6	1200	033.0US.14585	62,8
2200	1000	033.0US.14552	58,4	1100	033.0US.14569	61,8	1200	033.0US.14586	65,1
2300	1000	033.0US.14553	60,4	1100	033.0US.14570	63,9	1200	033.0US.14587	67,4
2400	1000	033.0US.14554	64,8	1100	033.0US.14571	68,4	1200	033.0US.14588	72,0

EXHAUST HOOD WITH MOTOR can be supplied with a mounting kit and a backlight on request (p.81). It is possible to design with holes for connection to ventilation and to manufacture flanges for connection to the duct.



WALL EXHAUST HOOD WITH MOTOR WITH LIGHT (TRAPEZOID)

Length, mm	Depth, mm	Code	W, kg	Depth, mm	Code	W, kg	Depth, mm	Code	W, kg	Depth, mm	Code	W, kg
800	900	035.0US.14444	22,2	1000	035.0US.14460	23,6	1100	035.0US.14476	25,0	1200	035.0US.14493	26,4
900	900	035.0US.14445	24,1	1000	035.0US.14461	25,6	1100	035.0US.14477	27,2	1200	035.0US.14494	28,8
1000	900	035.0US.14446	28,3	1000	035.0US.14462	29,9	1100	035.0US.14478	31,6	1200	035.0US.14495	33,4
1100	900	035.0US.14447	30,2	1000	035.0US.14463	32,0	1100	035.0US.14479	33,8	1200	035.0US.14496	35,7
1200	900	035.0US.14448	32,0	1000	035.0US.04823	34,0	1100	035.0US.14480	36,0	1200	035.0US.14497	38,0
1300	900	035.0US.14449	33,9	1000	035.0US.14464	36,0	1100	035.0US.14481	38,1	1200	035.0US.14498	40,3
1400	900	035.0US.14450	36,2	1000	035.0US.14465	38,4	1100	035.0US.14482	40,7	1200	035.0US.14499	43,0
1500	900	035.0US.14451	40,4	1000	035.0US.14466	42,7	1100	035.0US.14483	45,1	1200	035.0US.14500	47,5
1600	900	035.0US.05446	42,3	1000	035.0US.14467	44,8	1100	035.0US.14484	47,3	1200	035.0US.14501	49,8
1700	900	035.0US.14452	44,2	1000	035.0US.14468	46,8	1100	035.0US.14485	49,5	1200	035.0US.14502	52,1
1800	900	035.0US.14453	46,1	1000	035.0US.14469	48,8	1100	035.0US.14486	51,7	1200	035.0US.14503	54,4
1900	900	035.0US.14454	50,3	1000	035.0US.14470	53,1	1100	035.0US.14487	56,1	1200	035.0US.14504	59,1
2000	900	035.0US.14455	52,2	1000	035.0US.14471	55,2	1100	035.0US.14488	58,2	1200	035.0US.14505	61,4
2100	900	035.0US.14456	54,1	1000	035.0US.14472	57,2	1100	035.0US.14489	60,4	1200	035.0US.14506	63,6
2200	900	035.0US.14457	56,0	1000	035.0US.14473	59,2	1100	035.0US.14490	62,6	1200	035.0US.14507	65,9
2300	900	035.0US.14458	57,9	1000	035.0US.14474	61,3	1100	035.0US.14491	64,8	1200	035.0US.14508	68,2
2400	900	035.0US.14459	62,0	1000	035.0US.14475	65,6	1100	035.0US.14492	69,2	1200	035.0US.14509	72,8

Production of other designs of wall exhaust hoods is possible:

WALL EXHAUST HOOD WITHOUT MOTOR N (CUBIC WITH A BEVEL)

**WALL EXHAUST HOOD WITHOUT MOTOR N WITH LIGHT
(CUBIC WITH A BEVEL)**



Length, mm	Depth, mm	Height, mm	Note
от 800 до 2400	900	350	Dimensions in steps of 100 mm
от 800 до 2400	1000	350	
от 800 до 2400	1100	350	
от 800 до 2400	1200	350	

**WALL EXHAUST HOOD WITHOUT MOTOR (CUBIC)
WALL EXHAUST HOOD WITHOUT MOTOR WITH LIGHT
(CUBIC)**

Length, mm	Depth, mm	Height, mm	Note
от 800 до 2400	800*	350	Dimensions in steps of 100 mm
от 800 до 2400	900**		
от 800 до 2400	1000		
от 800 до 2400	1100		
от 800 до 2400	1200		
от 800 до 2400	800*	500	Dimensions in steps of 100 mm
от 800 до 2400	900**		
от 800 до 2400	1000		
от 800 до 2400	1100		
от 800 до 2400	1200		



* - the depth of exhaust hoods without light from 800 mm

** - the depth of exhaust hoods with light from 900 mm

046. LIGHTING FOR EXHAUST HOOD

Optional equipment	Code	W, kg	Description
LIGHTING FOR EXHAUST HOOD 700	046.0US.19034	0,8	Lamps for exhaust hoods 2x40 W (0,08 kW)
LIGHTING FOR EXHAUST HOOD 1200	046.0US.19033	0,8	Lamps for exhaust hoods 4x40 W (0,16 kW)

047. MOUNTING KIT FOR EXHAUST HOOD

Optional equipment	ID	W, kg	Description
MOUNTING KIT F/EXHAUST HOOD	047.0US.01603	3,0	chains and fasteners

037. CENTRAL EXHAUST HOODS WITH MOTOR

- Steel AISI 430
- Execution versions: trapezoid; cubic with a bevel; cubic;
- Welded construction
- Labyrinth filter
- Drain channel for fat assembly for cubic version
- Adjustable inflow area
- It is possible to manufacture wall exhaust hood with non-standard sizes



CENTRAL EXHAUST HOOD WITH MOTOR (TRAPEZOID)



Length, mm	Depth, mm	Code	W, kg	Depth, mm	Code	W, kg	Depth, mm	Code	W, kg
800	1400	037.0US.14931	31,6	1600	037.0US.14948	34,9	1800	037.0US.14965	37,5
900	1400	037.0US.14932	34,4	1600	037.0US.14949	37,9	1800	037.0US.14966	40,8
1000	1400	037.0US.14933	41,2	1600	037.0US.14950	45,6	1800	037.0US.14967	49,0
1100	1400	037.0US.14934	43,9	1600	037.0US.14951	48,6	1800	037.0US.14968	51,9
1200	1400	037.0US.14935	46,7	1600	037.0US.14952	51,6	1800	037.0US.06605	54,8
1300	1400	037.0US.14936	49,4	1600	037.0US.14953	54,5	1800	037.0US.14969	57,8
1400	1400	037.0US.14937	52,1	1600	037.0US.14954	57,5	1800	037.0US.14970	60,7
1500	1400	037.0US.14938	59,0	1600	037.0US.14955	65,2	1800	037.0US.06147	69,5
1600	1400	037.0US.14939	61,7	1600	037.0US.14956	68,2	1800	037.0US.14971	72,7
1700	1400	037.0US.14940	64,5	1600	037.0US.14957	71,1	1800	037.0US.14972	75,9
1800	1400	037.0US.14941	67,2	1600	037.0US.14958	74,1	1800	037.0US.14973	79,1
1900	1400	037.0US.14942	74,0	1600	037.0US.14959	81,8	1800	037.0US.14974	87,0
2000	1400	037.0US.14943	76,8	1600	037.0US.14960	84,8	1800	037.0US.14975	90,3
2100	1400	037.0US.14944	79,6	1600	037.0US.14961	87,7	1800	037.0US.14976	93,5
2200	1400	037.0US.14945	82,4	1600	037.0US.14962	90,7	1800	037.0US.05287	96,8
2300	1400	037.0US.14946	85,2	1600	037.0US.14963	93,7	1800	037.0US.14977	100,1
2400	1400	037.0US.14947	91,9	1600	037.0US.14964	101,4	1800	037.0US.14978	107,9

Length, mm	Depth, mm	Code	W, kg	Depth, mm	Code	W, kg	Depth, mm	Code	W, kg
800	2000	037.0US.14979	40,4	2200	037.0US.14996	43,2	2400	037.0US.15013	46,0
900	2000	037.0US.14980	43,8	2200	037.0US.14997	47,0	2400	037.0US.15014	50,1
1000	2000	037.0US.14981	52,0	2200	037.0US.14998	55,4	2400	037.0US.15015	58,9
1100	2000	037.0US.14982	55,5	2200	037.0US.14999	59,2	2400	037.0US.15016	62,9
1200	2000	037.0US.14983	59,0	2200	037.0US.15000	62,9	2400	037.0US.15017	66,9
1300	2000	037.0US.14984	62,5	2200	037.0US.15001	66,7	2400	037.0US.15018	70,9
1400	2000	037.0US.14985	66,0	2200	037.0US.15002	70,4	2400	037.0US.15019	75,0
1500	2000	037.0US.14986	74,2	2200	037.0US.15003	78,9	2400	037.0US.15020	83,7
1600	2000	037.0US.14987	77,6	2200	037.0US.15004	82,7	2400	037.0US.15021	87,8
1700	2000	037.0US.14988	81,1	2200	037.0US.15005	86,4	2400	037.0US.15022	91,8
1800	2000	037.0US.14989	84,6	2200	037.0US.15006	90,2	2400	037.0US.15023	95,8
1900	2000	037.0US.14990	92,8	2200	037.0US.15007	98,7	2400	037.0US.15024	104,6
2000	2000	037.0US.01688	96,3	2200	037.0US.15008	102,4	2400	037.0US.15025	108,6
2100	2000	037.0US.14992	99,8	2200	037.0US.15009	106,2	2400	037.0US.15026	112,6
2200	2000	037.0US.14993	103,2	2200	037.0US.15010	109,9	2400	037.0US.15027	116,7
2300	2000	037.0US.14994	106,7	2200	037.0US.15011	113,7	2400	037.0US.15028	120,7
2400	2000	037.0US.014995	115,0	2200	037.0US.15012	122,2	2400	037.0US.15029	129,4

CENTRAL EXHAUST HOOD WITH MOTOR WITH LIGHT (TRAPEZOID)

Length, mm	Depth, mm	Code	W, kg	Depth, mm	Code	W, kg
800	1800	039.0US.14846	38,4	2000	039.0US.14863	41,2
900	1800	039.0US.14847	41,6	2000	039.0US.14864	44,7
1000	1800	039.0US.14848	49,8	2000	039.0US.14865	52,9
1100	1800	039.0US.14849	52,8	2000	039.0US.14866	56,4
1200	1800	039.0US.14850	55,7	2000	039.0US.14867	59,9
1300	1800	039.0US.14851	58,6	2000	039.0US.14868	63,7
1400	1800	039.0US.14852	62,4	2000	039.0US.14869	67,6
1500	1800	039.0US.14853	71,1	2000	039.0US.14870	75,8
1600	1800	039.0US.14854	74,3	2000	039.0US.14871	79,3
1700	1800	039.0US.14855	77,5	2000	039.0US.14872	82,7
1800	1800	039.0US.14856	80,7	2000	039.0US.14873	86,2
1900	1800	039.0US.14857	88,6	2000	039.0US.14874	94,4
2000	1800	039.0US.14858	91,9	2000	039.0US.14875	97,9
2100	1800	039.0US.14859	95,2	2000	039.0US.14876	101,4
2200	1800	039.0US.14860	98,4	2000	039.0US.14877	104,9
2300	1800	039.0US.14861	101,7	2000	039.0US.14878	108,4
2400	1800	039.0US.14862	109,5	2000	039.0US.14879	116,6

Length, mm	Depth, mm	Code	W, kg	Depth, mm	Code	W, kg
800	2200	039.0US.14880	44,1	2400	039.0US.14897	46,9
900	2200	039.0US.14881	47,9	2400	039.0US.14898	51,0
1000	2200	039.0US.14882	56,3	2400	039.0US.14899	59,7
1100	2200	039.0US.14883	60,0	2400	039.0US.14900	63,7
1200	2200	039.0US.14884	63,8	2400	039.0US.14901	67,8
1300	2200	039.0US.14885	67,5	2400	039.0US.14902	71,8
1400	2200	039.0US.14886	72,1	2400	039.0US.14903	76,6
1500	2200	039.0US.14887	80,6	2400	039.0US.14904	85,4
1600	2200	039.0US.14888	84,3	2400	039.0US.14905	89,4
1700	2200	039.0US.14889	88,1	2400	039.0US.14906	93,4
1800	2200	039.0US.14890	91,8	2400	039.0US.14907	97,4
1900	2200	039.0US.14891	100,3	2400	039.0US.14908	106,2
2000	2200	039.0US.14892	104,0	2400	039.0US.14909	110,2
2100	2200	039.0US.14893	107,8	2400	039.0US.14910	114,3
2200	2200	039.0US.14894	111,6	2400	039.0US.14911	118,3
2300	2200	039.0US.14895	115,3	2400	039.0US.14912	122,3
2400	2200	039.0US.14896	123,8	2400	039.0US.14913	131,0

Production of other designs of wall exhaust hoods is possible:

CENTRAL EXHAUST HOOD WITH MOTOR N (CUBIC WITH A BEVEL)

**CENTRAL EXHAUST HOOD WITH MOTOR N WITH LIGHT
(CUBIC WITH A BEVEL)**

Length, mm	Depth, mm	Height, mm	Note
от 800 до 2400	1600*	350	Dimensions in length with step of 100 mm
от 800 до 2400	1800**	350	
от 800 до 2400	2000	350	
от 800 до 2400	2200	350	Dimensions in depth with step of 200 mm
от 800 до 2400	2400	350	

* - the depth of exhaust hoods without light from 1600 mm

** - the depth of exhaust hoods with light from 1800 mm

CENTRAL EXHAUST HOOD WITH MOTOR (CUBIC)

CENTRAL EXHAUST HOOD WITH MOTOR WITH LIGHT (CUBIC)

Length, mm	Depth, mm	Height, mm	Note
от 800 до 2400	1600	350	Dimensions in length with step of 100 mm
от 800 до 2400	1800		
от 800 до 2400	2000		
от 800 до 2400	2200		Dimensions in depth with step of 200 mm
от 800 до 2400	2400		
от 800 до 2400	1600	500	Dimensions in length with step of 100 mm
от 800 до 2400	1800		
от 800 до 2400	2000		
от 800 до 2400	2200		Dimensions in depth with step of 200 mm
от 800 до 2400	2400		

* - the depth of exhaust hoods without light from 1600 mm

** - the depth of exhaust hoods with light from 1800 mm

They trust us:



CONTACTS

Address: Russia, Moscow.
Tel./Fax: +7 (495) 925-76-76
E-mail: info@simeco.ru
www.simeco.ru

